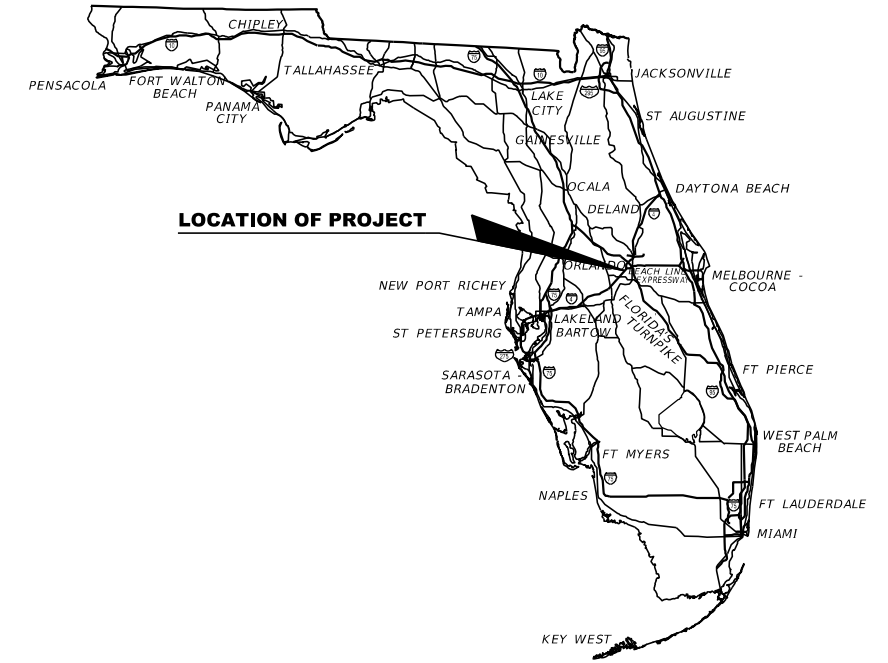


STATE OF FLORIDA
DEPARTMENT OF TRANSPORTATION

CONTRACT PLANS

FINANCIAL PROJECT ID 242484-8-52-01
(FEDERAL FUNDS)
ORANGE COUNTY (75280)
STATE ROAD NO. 400 (1-4)

SIGNALIZATION PLANS



INDEX OF SIGNALIZATION PLANS

<i>SHEET NO.</i>	<i>SHEET DESCRIPTION</i>
T-1	KEY SHEET
T-2 - T-9	CONCEPT SIGNALIZATION PLAN

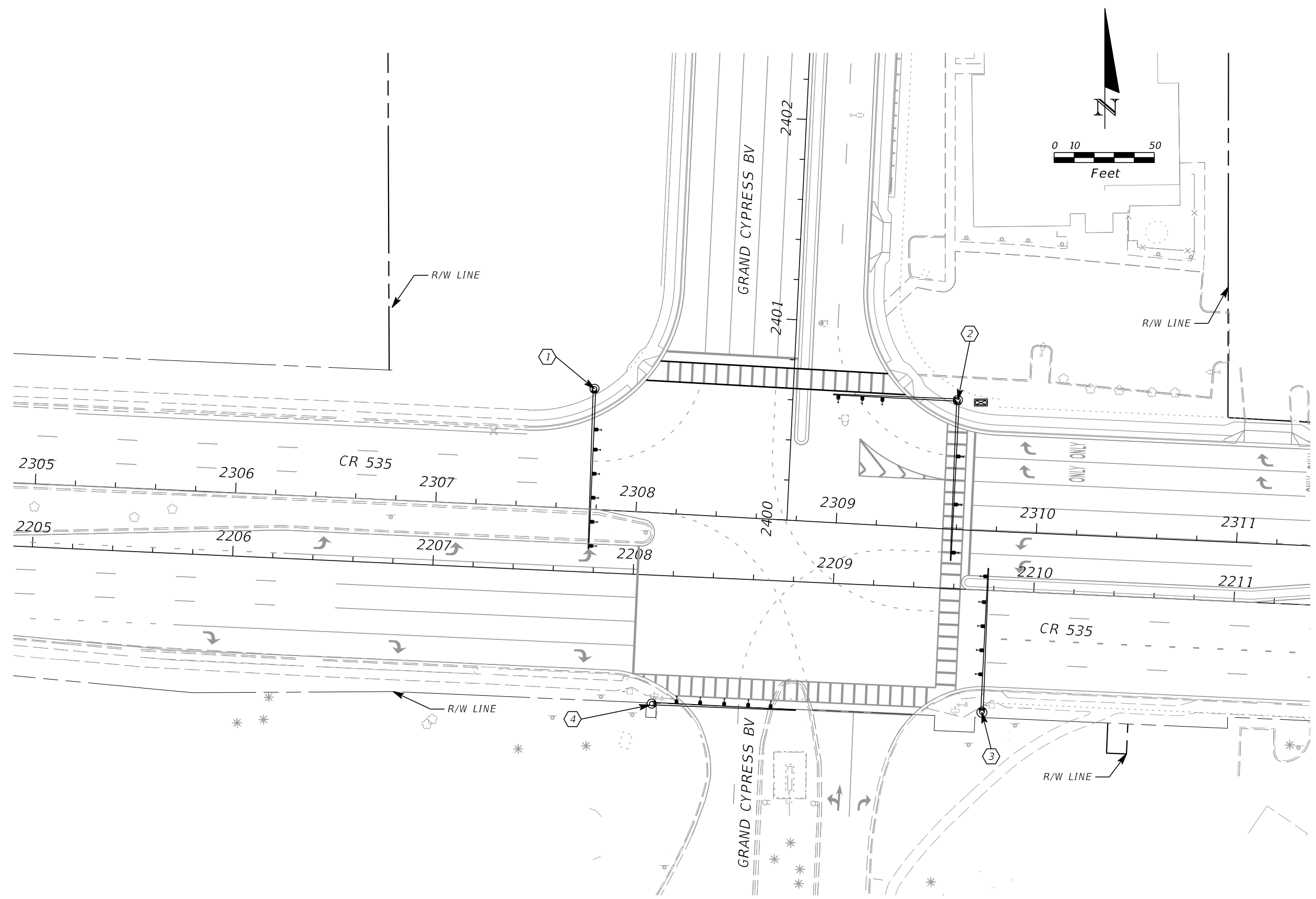
FINAL
CONCEPT PLANS
FEBRUARY 2021

SIGNALIZATION PLANS
ENGINEER OF RECORD:
SUSANNE S. WILLIAMS, P.E. NO.: 49486
TRAFFIC ENGINEERING DATA SOLUTIONS, INC.
80 SPRING VISTA DRIVE
DEBARY, FL 32713
(386) 753-0558
CONTRACT NO.: C9176
VENDOR NO.:

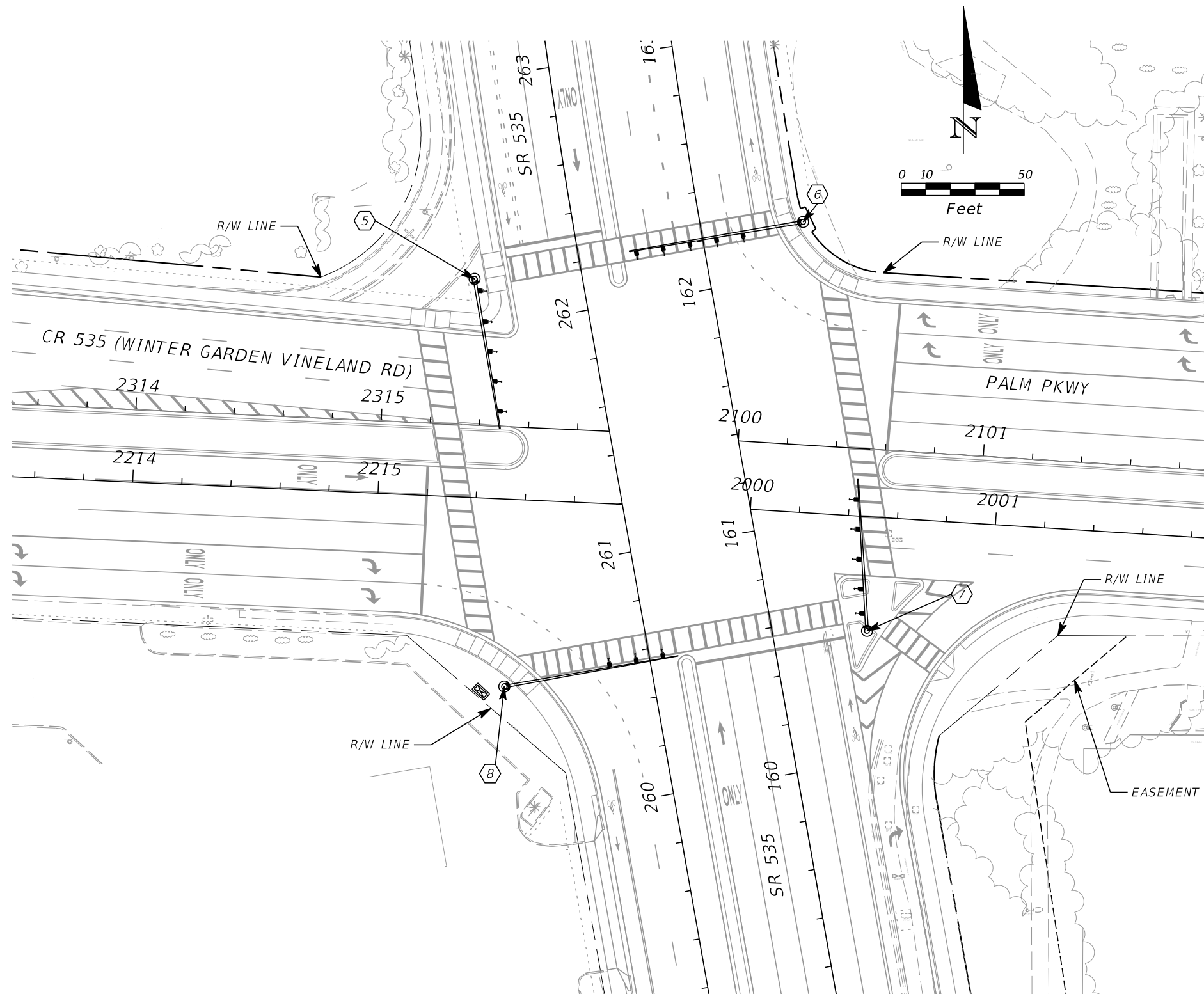
FDOT PROJECT MANAGER:
SU HAO, PE

CONSTRUCTION CONTRACT NO.	FISCAL YEAR	SHEET NO.
TBD	22	T-1

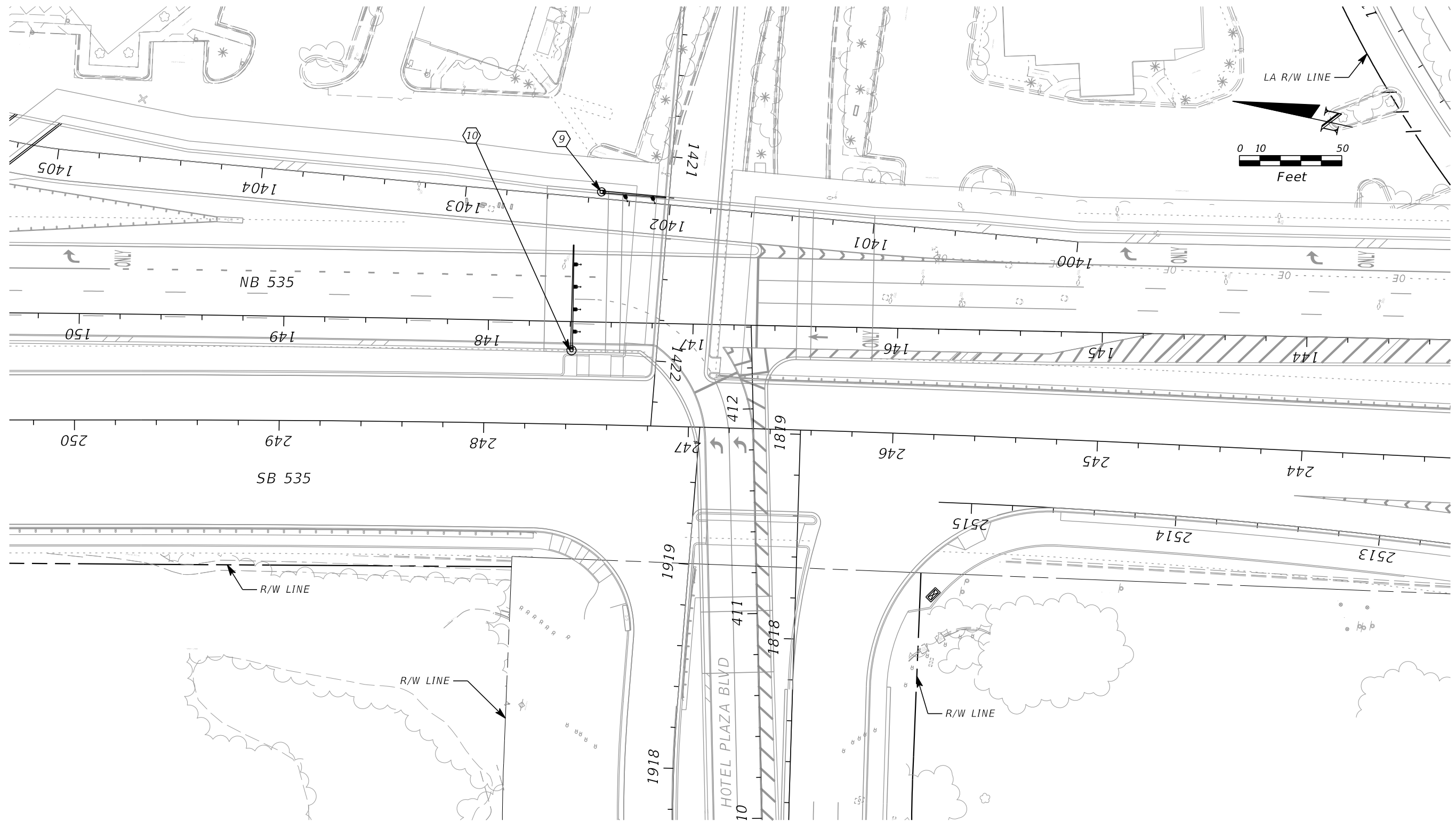
PRELIMINARY: NOT FOR CONSTRUCTION



REVISIONS				SUSANNE S. WILLIAMS, P.E. P.E. NO.: 49486 TRAFFIC ENGINEERING DATA SOLUTIONS, INC. 80 SPRING VISTA DRIVE DEBARY, FL 32713	STATE OF FLORIDA DEPARTMENT OF TRANSPORTATION			SIGNALIZATION PLAN CR 535 @ GRAND CYPRESS	SHEET NO. T-2
DATE	DESCRIPTION	DATE	DESCRIPTION		ROAD NO.	COUNTY	FINANCIAL PROJECT ID		
					CR 535	ORANGE	242484-8-52-01		



REVISIONS				SUSANNE S. WILLIAMS, P.E. P.E. NO.: 49486 TRAFFIC ENGINEERING DATA SOLUTIONS, INC. 80 SPRING VISTA DRIVE DEBARY, FL 32713	STATE OF FLORIDA DEPARTMENT OF TRANSPORTATION			SIGNALIZATION PLAN SR 535 @ PALM PKWY	SHEET NO. T-3
DATE	DESCRIPTION	DATE	DESCRIPTION		ROAD NO.	COUNTY	FINANCIAL PROJECT ID		
					CR 535	ORANGE	242484-8-52-01		



ELEVATED SIGNALS

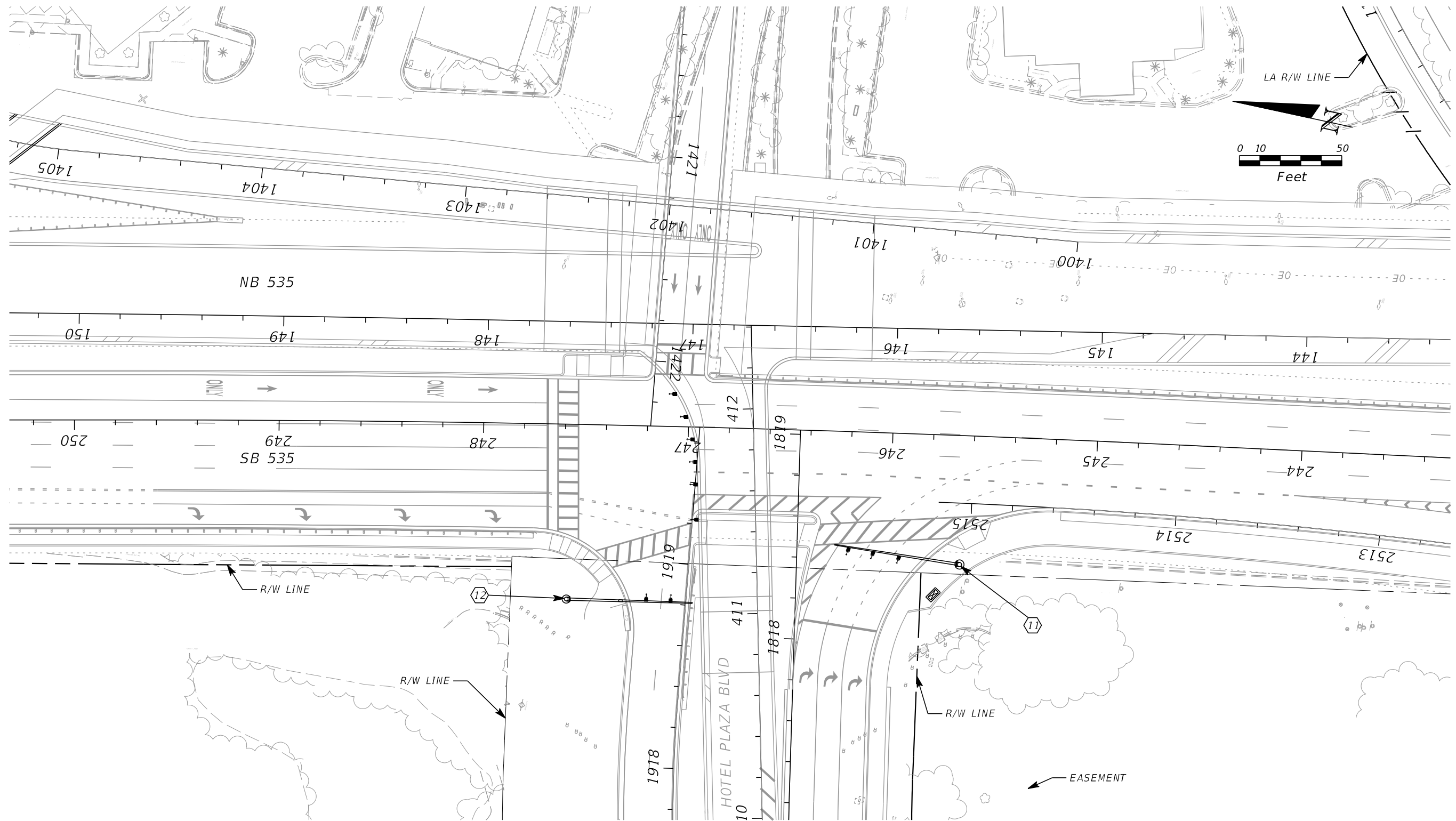
REVISIONS	
DATE	DESCRIPTION

SUSANNE S. WILLIAMS, P.E.
P.E. NO.: 49486
TRAFFIC ENGINEERING DATA SOLUTIONS, INC.
80 SPRING VISTA DRIVE
DEBARY, FL 32713

STATE OF FLORIDA DEPARTMENT OF TRANSPORTATION		
ROAD NO.	COUNTY	FINANCIAL PROJECT ID
CR 535	ORANGE	242484-8-52-01

SIGNALIZATION PLAN
SR 535 @ HOTEL PLAZA BV

SHEET NO.
T-4A



GROUND LEVEL SIGNALS

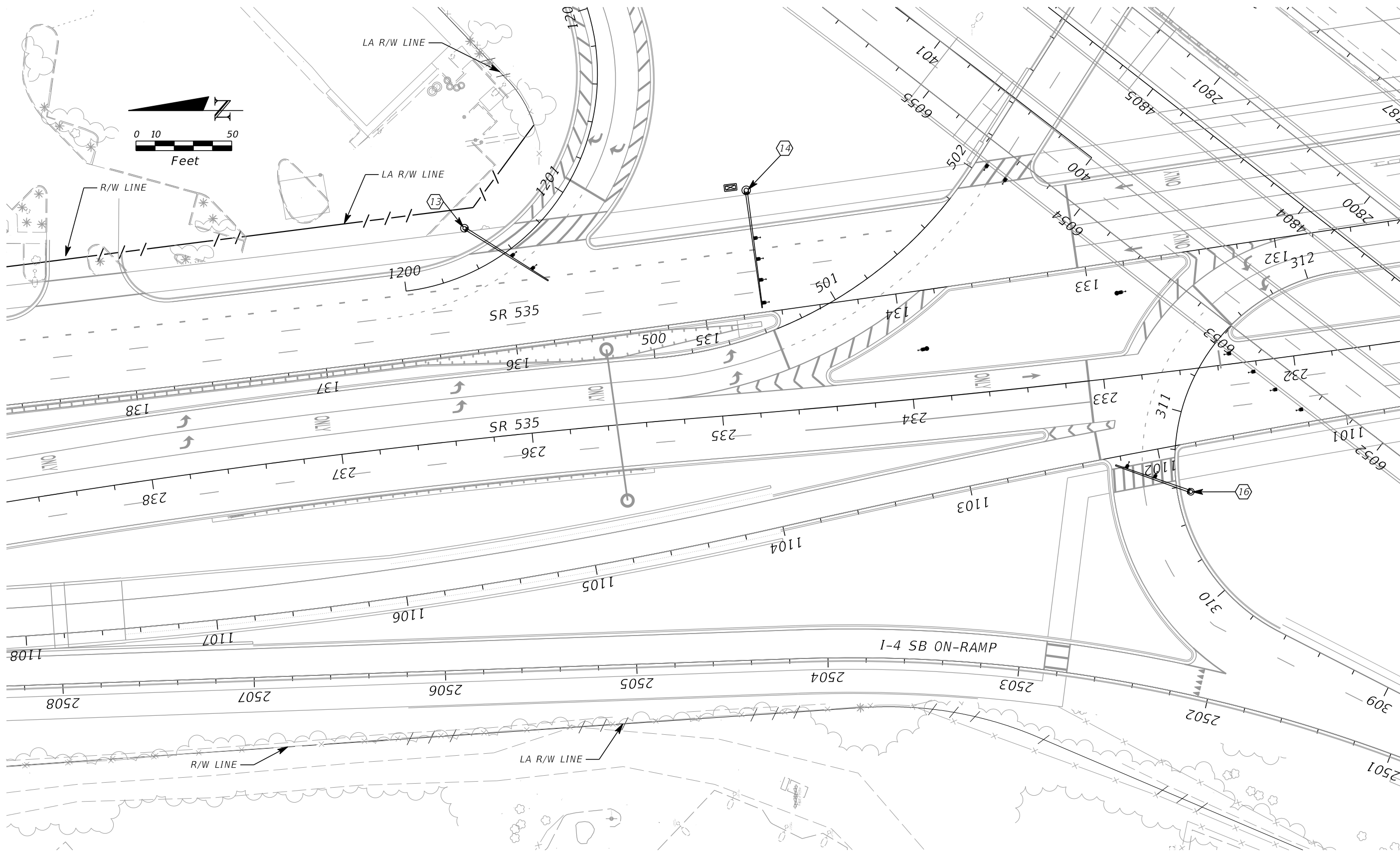
REVISIONS	
DATE	DESCRIPTION

SUSANNE S. WILLIAMS, P.E.
P.E. NO.: 49486
TRAFFIC ENGINEERING DATA SOLUTIONS, INC.
80 SPRING VISTA DRIVE
DEBARY, FL 32713

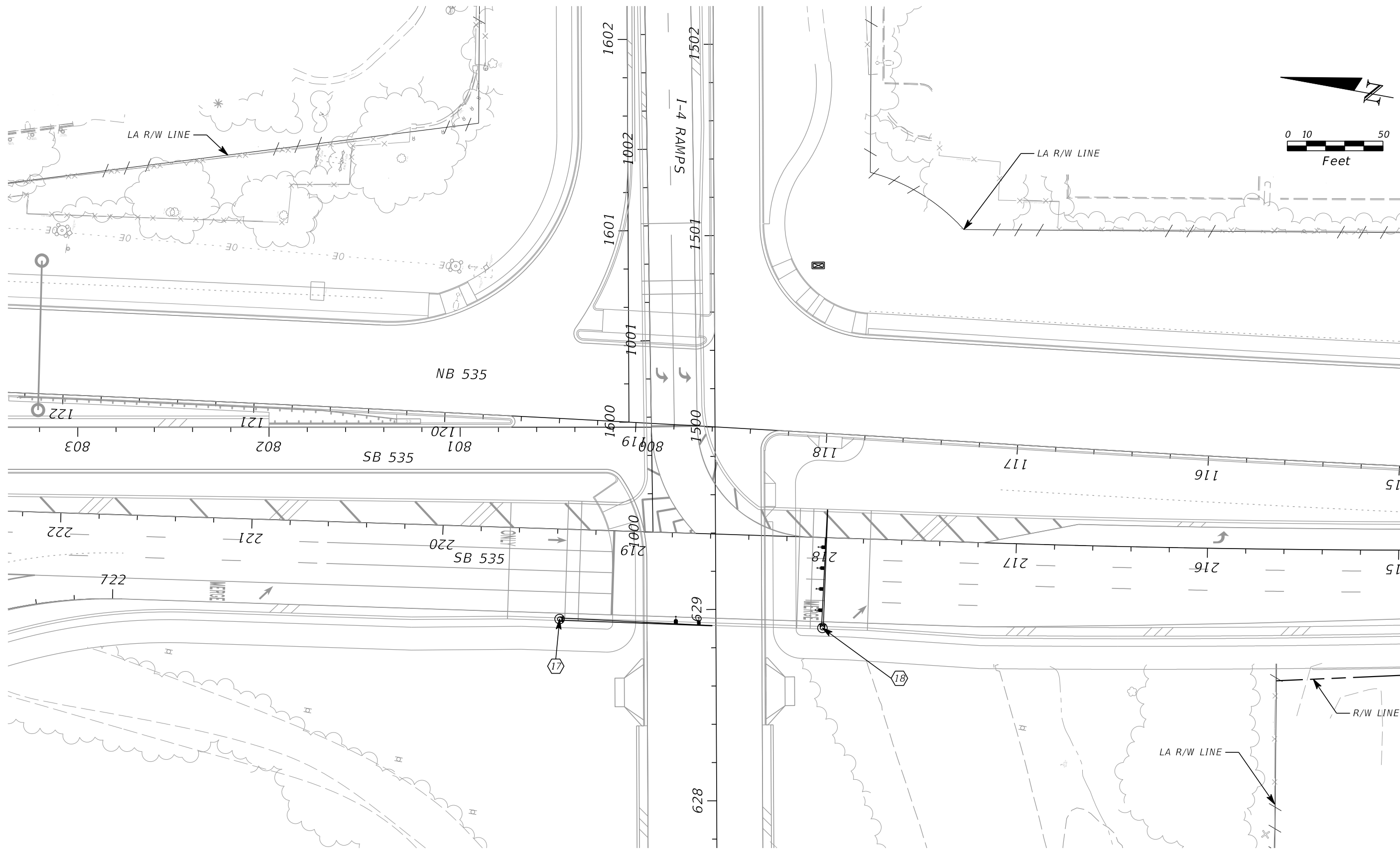
STATE OF FLORIDA DEPARTMENT OF TRANSPORTATION		
ROAD NO.	COUNTY	FINANCIAL PROJECT ID
CR 535	ORANGE	242484-8-52-01

SIGNALIZATION PLAN
SR 535 @ HOTEL PLAZA BV

SHEET NO.
T-4B

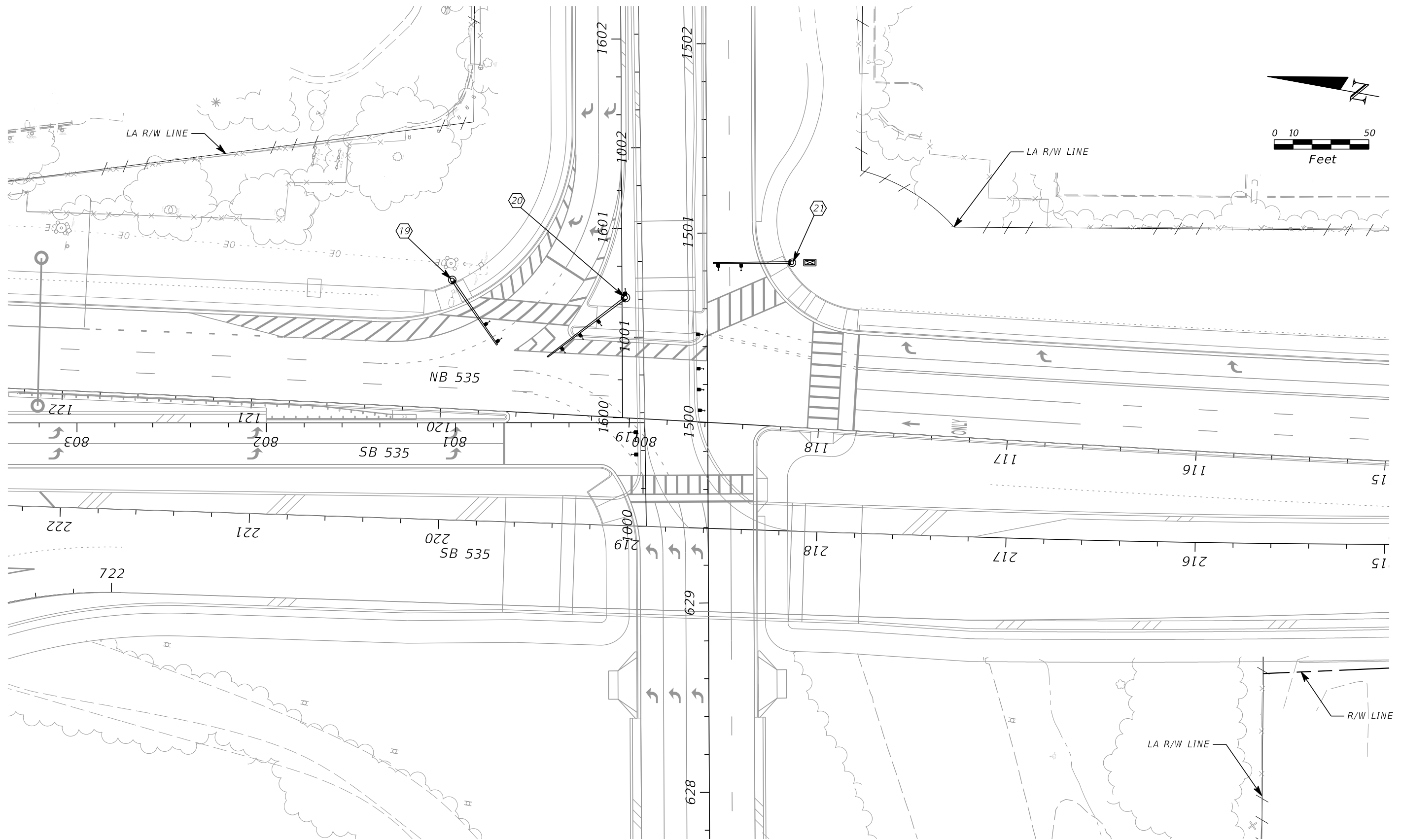


REVISIONS				SUSANNE S. WILLIAMS, P.E. P.E. NO.: 49486 TRAFFIC ENGINEERING DATA SOLUTIONS, INC. 80 SPRING VISTA DRIVE DEBARY, FL 32713	STATE OF FLORIDA DEPARTMENT OF TRANSPORTATION			SIGNALIZATION PLAN SR 400 (I-4) WEST RAMPS	SHEET NO. T-5
DATE	DESCRIPTION	DATE	DESCRIPTION		ROAD NO.	COUNTY	FINANCIAL PROJECT ID		
					CR 535	ORANGE	242484-8-52-01		



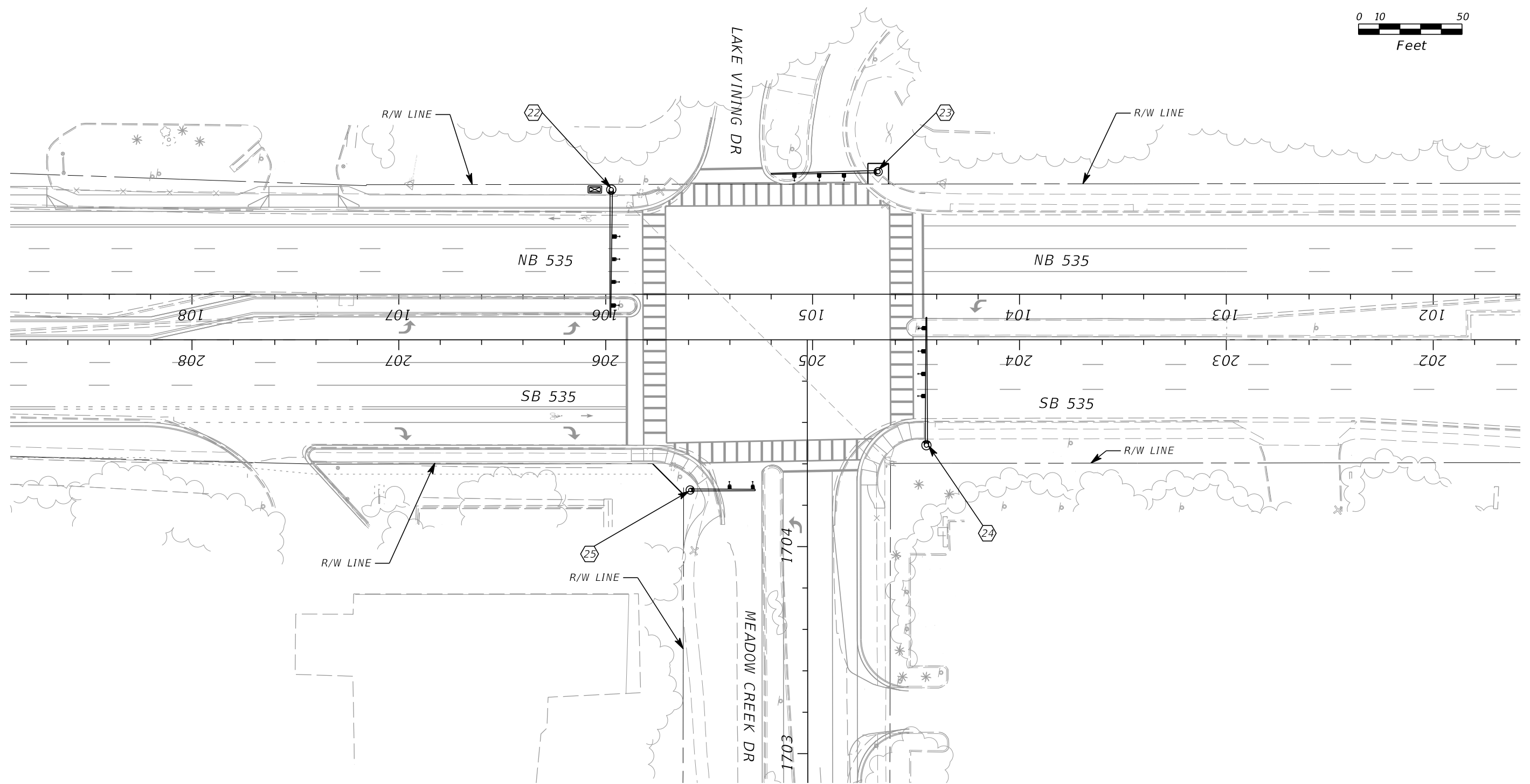
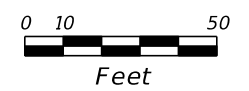
ELEVATED SIGNALS

REVISIONS				SUSANNE S. WILLIAMS, P.E. P.E. NO.: 49486 TRAFFIC ENGINEERING DATA SOLUTIONS, INC. 80 SPRING VISTA DRIVE DEBARY, FL 32713	STATE OF FLORIDA DEPARTMENT OF TRANSPORTATION			SIGNALIZATION PLAN SR 400 (I-4) EAST RAMP	SHEET NO. T-6A
DATE	DESCRIPTION	DATE	DESCRIPTION		ROAD NO.	COUNTY	FINANCIAL PROJECT ID		
					CR 535	ORANGE	242484-8-52-01		

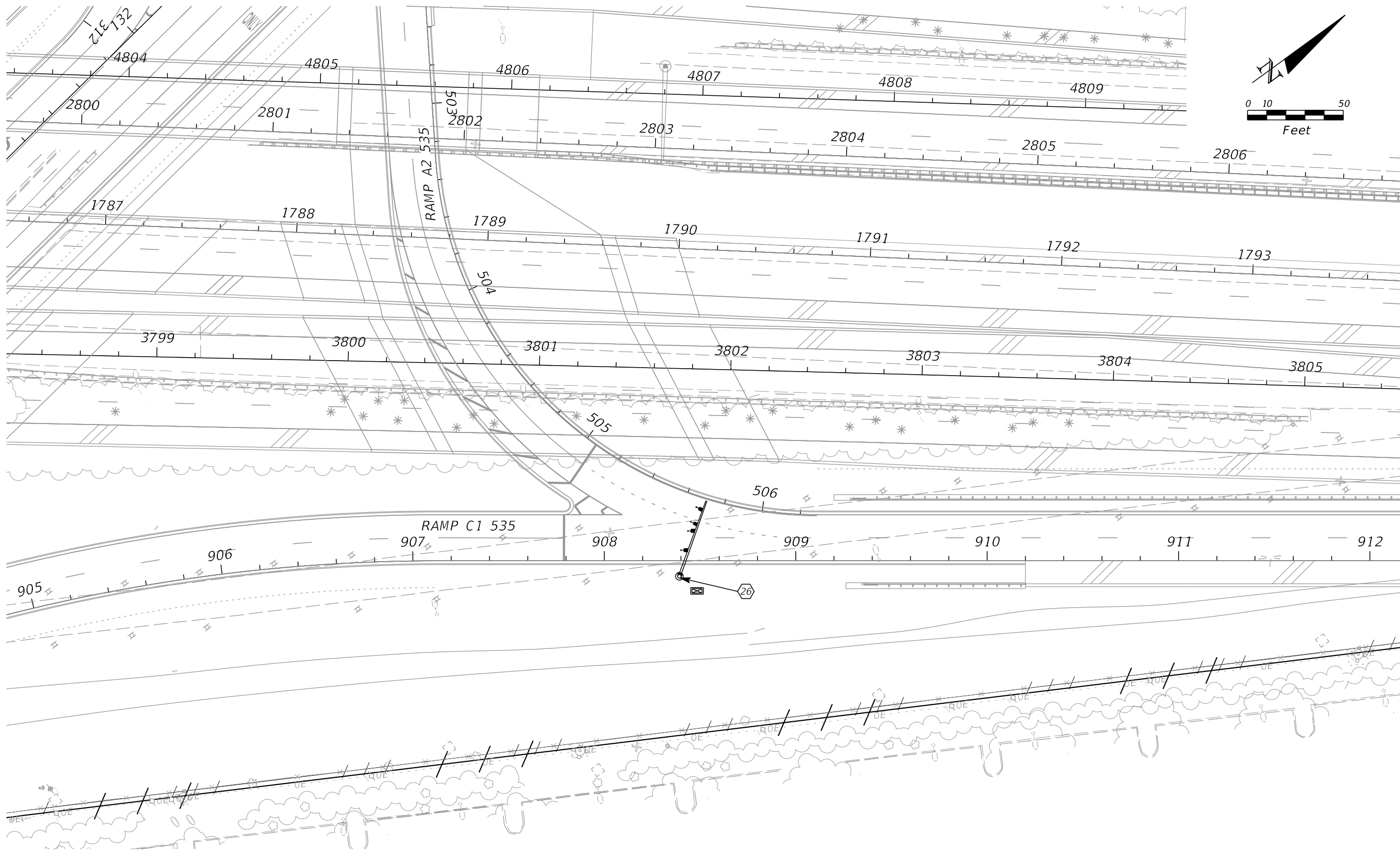


GROUND LEVEL SIGNALS

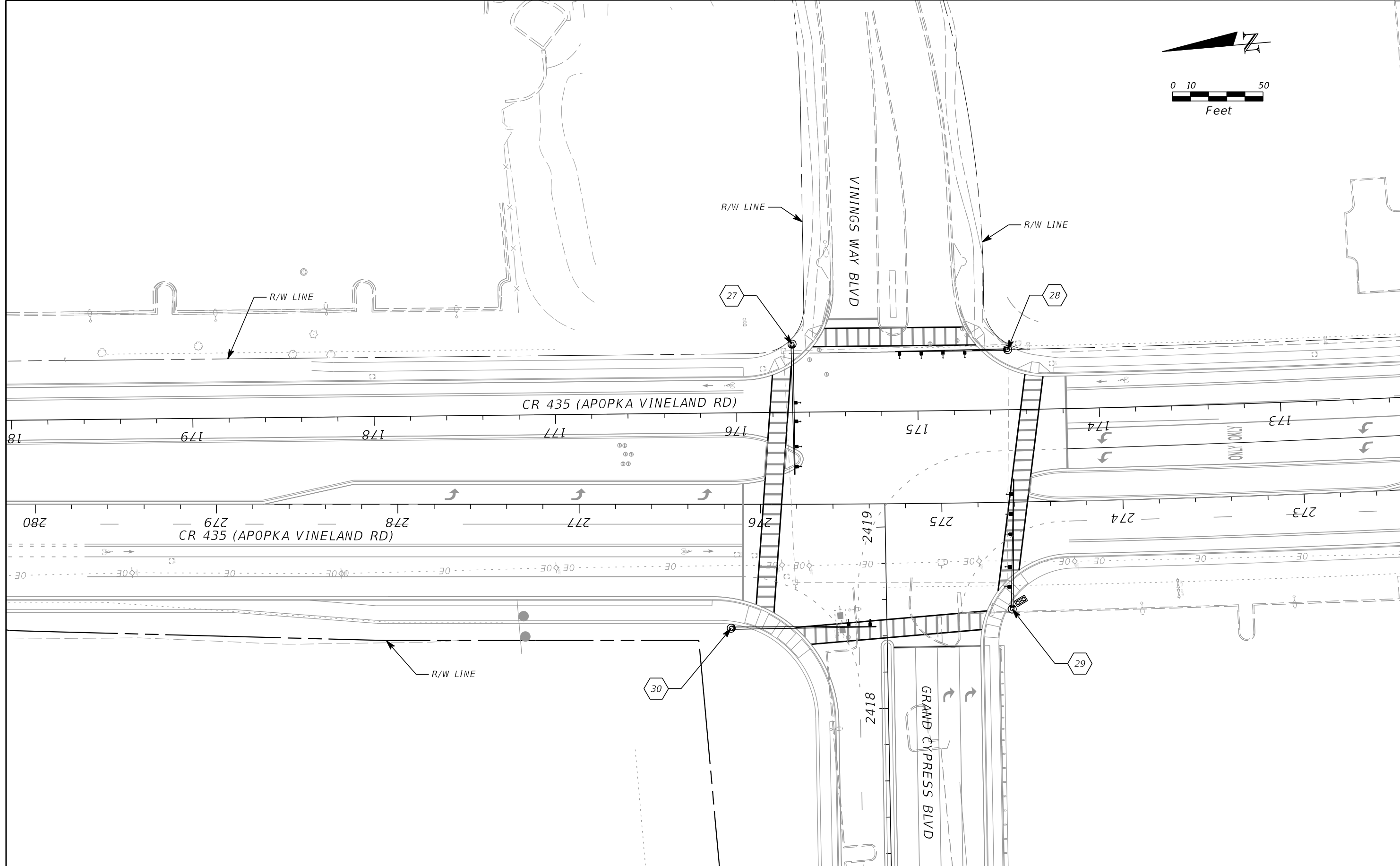
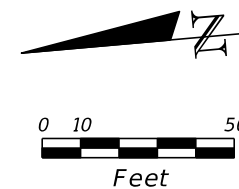
REVISIONS				SUSANNE S. WILLIAMS, P.E. P.E. NO.: 49486 TRAFFIC ENGINEERING DATA SOLUTIONS, INC. 80 SPRING VISTA DRIVE DEBARY, FL 32713	STATE OF FLORIDA DEPARTMENT OF TRANSPORTATION			SIGNALIZATION PLAN SR 400 (I-4) EAST RAMP	SHEET NO. T-6B
DATE	DESCRIPTION	DATE	DESCRIPTION		ROAD NO.	COUNTY	FINANCIAL PROJECT ID		
					CR 535	ORANGE	242484-8-52-01		



REVISIONS				SUSANNE S. WILLIAMS, P.E. P.E. NO.: 49486 TRAFFIC ENGINEERING DATA SOLUTIONS, INC. 80 SPRING VISTA DRIVE DEBARY, FL 32713	STATE OF FLORIDA DEPARTMENT OF TRANSPORTATION			SIGNALIZATION PLAN SR 535 @ MEADOW CREEK DR	SHEET NO. T-7
DATE	DESCRIPTION	DATE	DESCRIPTION		ROAD NO.	COUNTY	FINANCIAL PROJECT ID		
					CR 535	ORANGE	242484-8-52-01		



REVISIONS				SUSANNE S. WILLIAMS, P.E. P.E. NO.: 49486 TRAFFIC ENGINEERING DATA SOLUTIONS, INC. 80 SPRING VISTA DRIVE DEBARY, FL 32713	STATE OF FLORIDA DEPARTMENT OF TRANSPORTATION			I-4 NB ENTRANCE RAMP SIGNALIZATION PLAN	SHEET NO. T-8
DATE	DESCRIPTION	DATE	DESCRIPTION		ROAD NO.	COUNTY	FINANCIAL PROJECT ID		
					CR 535	ORANGE	242484-8-52-01		



REVISIONS				SUSANNE S. WILLIAMS, P.E. P.E. NO.: 49486 TRAFFIC ENGINEERING DATA SOLUTIONS, INC. 80 SPRING VISTA DRIVE DEBARY, FL 32713	STATE OF FLORIDA DEPARTMENT OF TRANSPORTATION			SIGNALIZATION PLAN CR 435 @ VININGS WAY	SHEET NO. T-9
DATE	DESCRIPTION	DATE	DESCRIPTION		ROAD NO.	COUNTY	FINANCIAL PROJECT ID		
					CR 535	ORANGE	242484-8-52-01		